

MADISON OVERLOOK

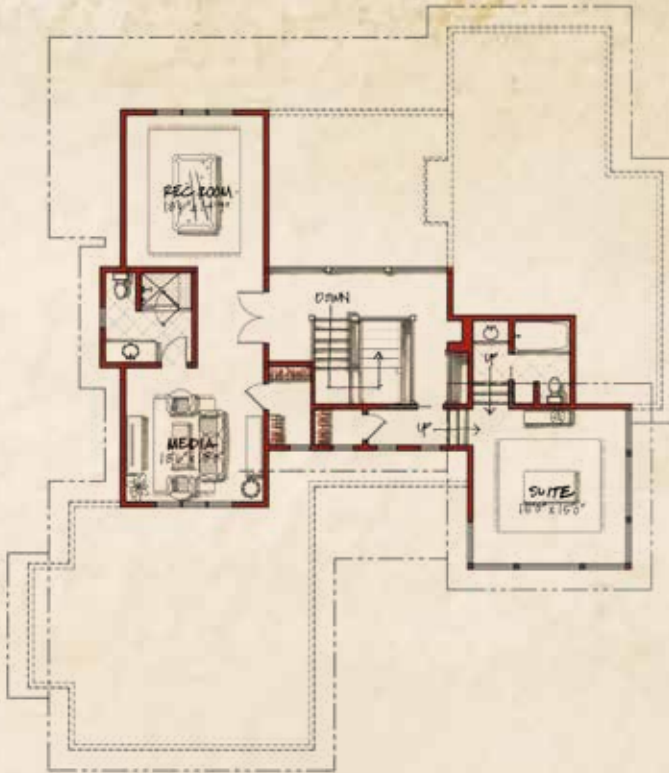
4 BEDROOMS + 4 BATHS

TOTAL FINISHED: 3329 SQ. FT.

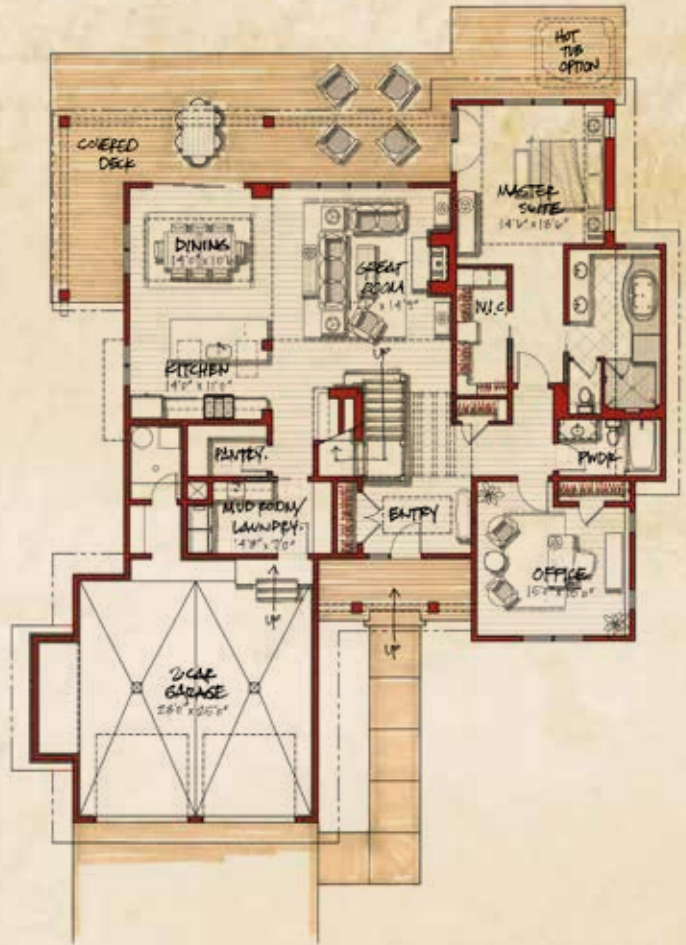
DECK: 817 SQ. FT.

2-CAR GARAGE: 726 SQ. FT.

TOTAL: 4872 SQ. FT.



UPPER LEVEL FINISHED: 1265 SQ. FT.



MAIN LEVEL FINISHED: 2064 SQ. FT.

MADISON OVERLOOK DETAILS:

- Flexible, open floor plan
- Great room with wood floors, dry-stack gas fireplace, vaulted wood ceiling, and large windows
- Kitchen with wood floors, solid stone countertops, stone backsplash, reclaimed wood bar top, deep stainless steel farm sink, built-in work station, and walk-in pantry
- Main level master suite with a walk-in closet and access to covered deck
- Flexible main level guest room can be used either as an office or bedroom
- Laundry room
- Attached two-car garage
- Exterior featuring stained wood siding, heavy timber accents, and stone



BlackBullBozeman.com | 406.556.5011 | 122 Highnoon Way | Bozeman, Montana 59718