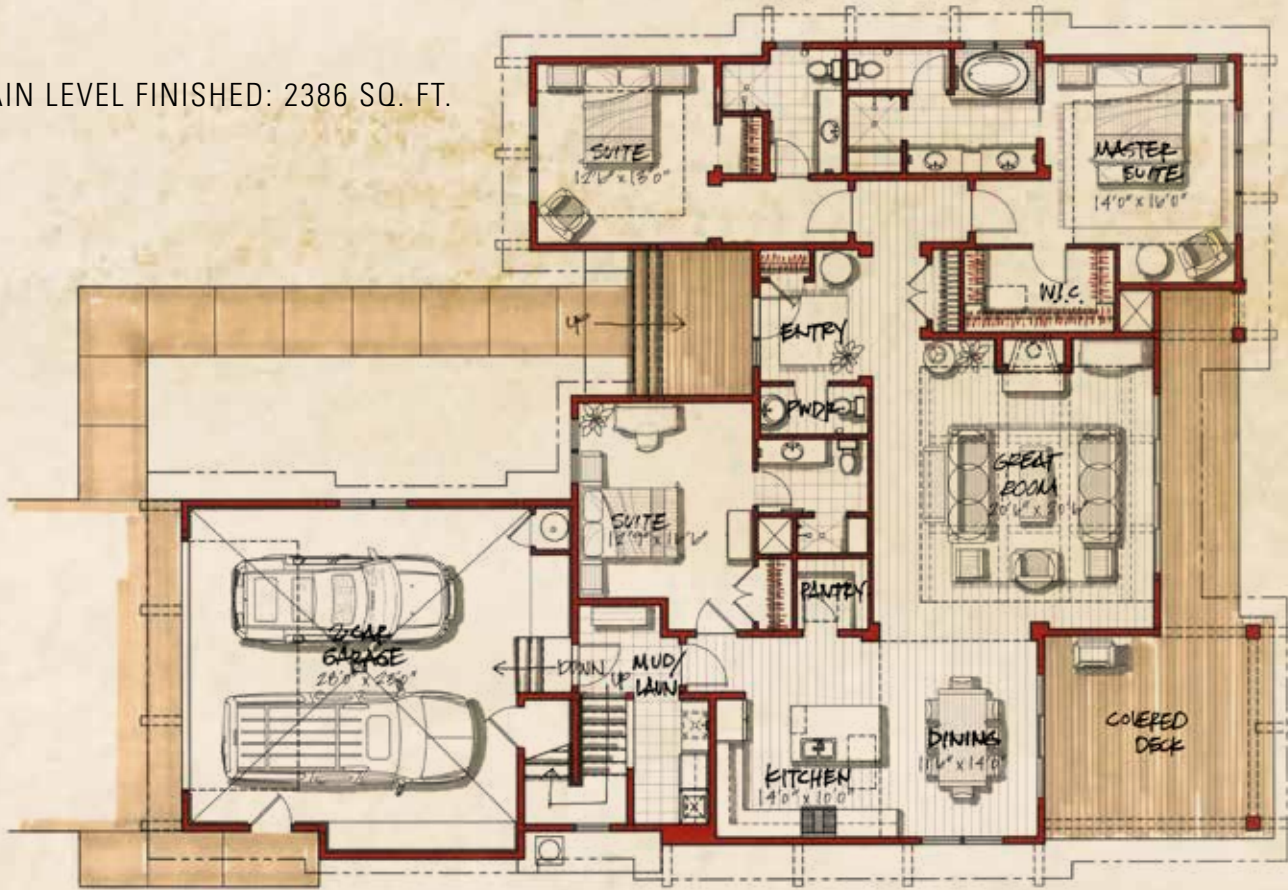


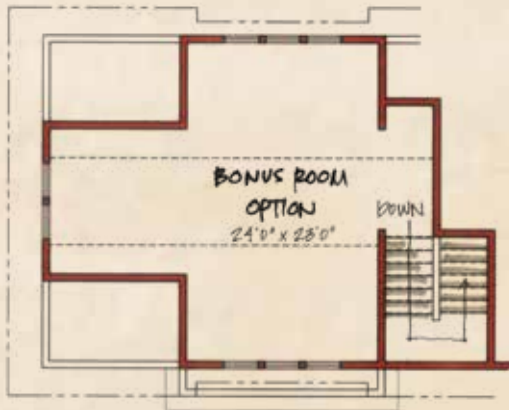
GRANITE PEAK WITH BONUS ROOM

3 BEDROOMS + 3½ BATHS

MAIN LEVEL FINISHED: 2386 SQ. FT.



UPPER LEVEL FINISHED: 522 SQ. FT.



TOTAL FINISHED: 2908 SQ. FT.
DECK: 463 SQ. FT.
2-CAR GARAGE: 674 SQ. FT.
TOTAL: 4045 SQ. FT.

GRANITE PEAK WITH BONUS ROOM DETAILS:

- Open floor plan
- Main level master suite, with access to the covered deck, a walk-in closet, and a well-appointed bath with soaking tub, multi-head shower, and a dual sink vanity
- Kitchen materials include solid stone countertops, tiled backsplash, stainless steel appliances, and hardwood floors
- Great room has access to the covered deck, floor-to-ceiling dry-stack fireplace, coffered wood beam ceiling, and hardwood floors
- Mudroom/laundry room
- Attached two-car garage
- Exterior featuring stained wood siding, heavy timber accents, and stone



BlackBullBozeman.com | 406.556.5011 | 122 Highnoon Way | Bozeman, Montana 59718