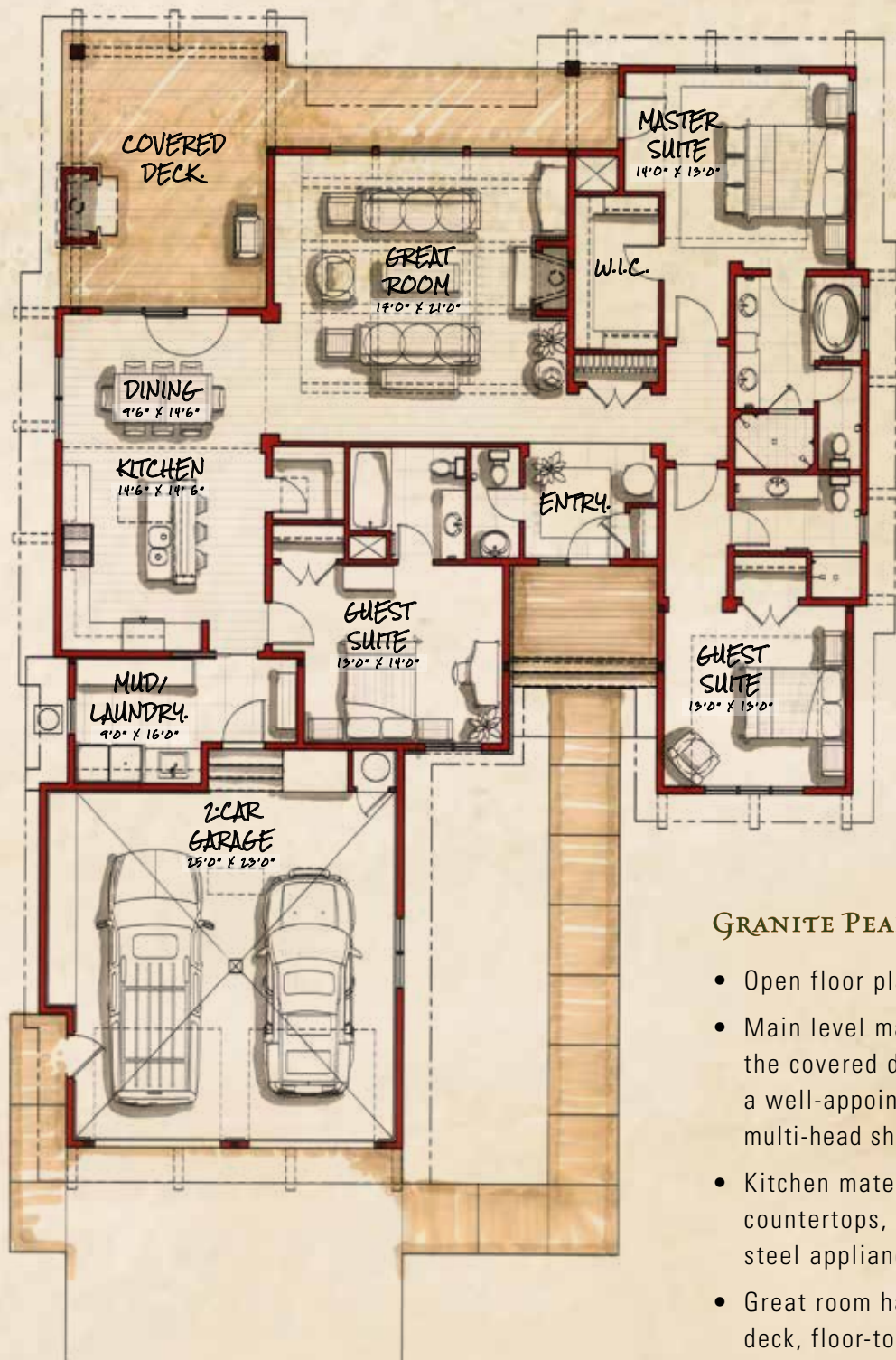


GRANITE PEAK CLUB HOME

3 BEDROOMS + 3½ BATHS



MAIN LEVEL FINISHED: 2341 SQ. FT.

TOTAL FINISHED: 2341 SQ. FT.

DECK: 435 SQ. FT.

2-CAR GARAGE: 640 SQ. FT.

TOTAL: 3416 SQ. FT.

GRANITE PEAK CLUB HOME DETAILS:

- Open floor plan
- Main level master suite, with access to the covered deck, a walk-in closet, and a well-appointed bath with soaking tub, multi-head shower, and a dual sink vanity
- Kitchen materials include solid stone countertops, tiled backsplash, stainless steel appliances, and hardwood floors
- Great room has access to the covered deck, floor-to-ceiling dry-stack fireplace, coffered wood beam ceiling, and hardwood floors
- Mudroom/laundry room
- Attached two-car garage
- Exterior featuring stained wood siding, heavy timber accents, and stone



BlackBullBozeman.com | 406.556.5011 | 122 Highnoon Way | Bozeman, Montana 59718

Depictions contained in this brochure are representational of the home that may be constructed by the developer, however, certain homes on specific lots will have mirrored floorplans, turned garages, and varying landscape features. In certain instances the developer may be required to make plan and material changes that will be of substantially similar quality to what is represented. Measurements of areas and square footages are approximate and deemed reliable but not guaranteed. This is not an offer to sell or lease real estate. Void where prohibited.