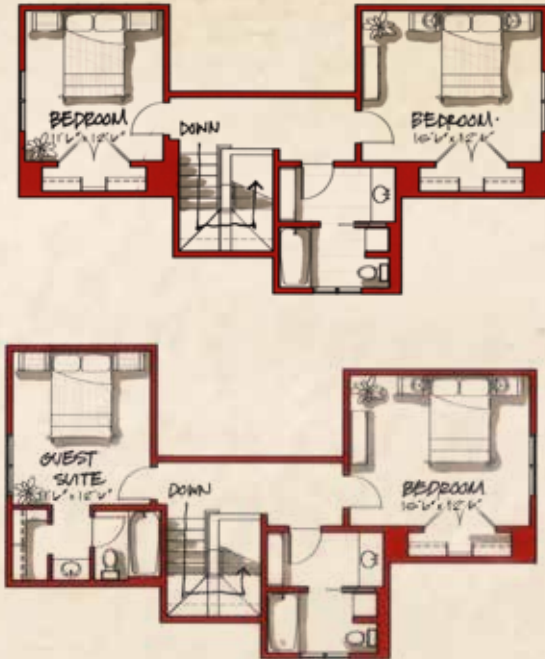


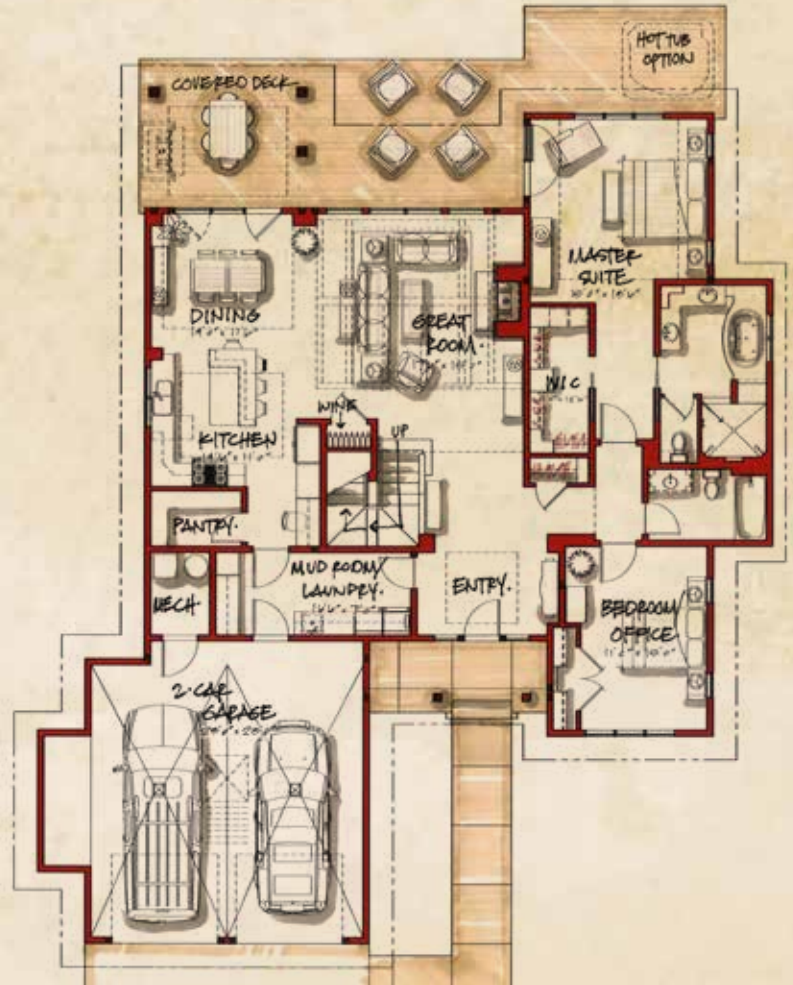
# MADISON CLUB HOME

4 BEDROOMS + 3 BATHS OR 4 BEDROOMS + 4 BATHS

TOTAL FINISHED: 2712 SQ. FT.  
DECK: 553 SQ. FT.  
2-CAR GARAGE: 652 SQ. FT.  
TOTAL: 3917 SQ. FT.



UPPER LEVEL FINISHED: 649 OR 700 SQ. FT.



MAIN LEVEL FINISHED: 2063 SQ. FT.

## MADISON HOME DETAILS:

- Flexible, open floor plan
- Great room with wood floors, dry-stack gas fireplace, vaulted wood ceiling, and large windows
- Kitchen with wood floors, solid stone countertops, stone backsplash, reclaimed wood bar top, deep stainless steel farm sink, built-in work station, and walk-in pantry
- Main level master suite with a walk-in closet and access to covered deck
- Flexible main level guest room can be used either as an office or bedroom
- Laundry room
- Attached two-car garage
- Exterior featuring stained wood siding, heavy timber accents, and stone



BlackBullBozeman.com | 406.556.5011 | 122 Highnoon Way | Bozeman, Montana 59718

Depictions contained in this brochure are representative of the home that may be constructed by the developer, however, certain homes on specific lots will have mirrored floorplans, turned garages, and varying landscape features. In certain instances the developer may be required to make plan and material changes that will be of substantially similar quality to what is represented. Measurements of areas and square footages are approximate and deemed reliable but not guaranteed. This is not an offer to sell or lease real estate. Void where prohibited.